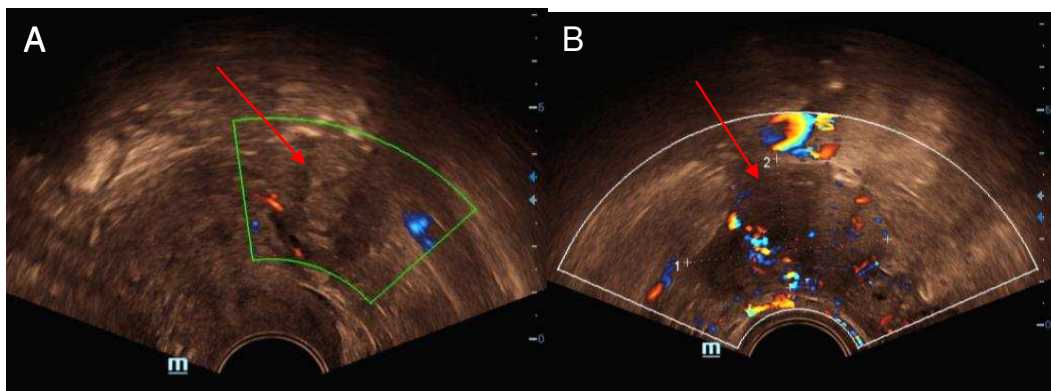


Supplementary Figure 1: ultrasound of the right ovary (A) is showing persistent multilocular solid avascular mass (stationary) (red arrow), left ovary (B) is showing multilocular solid avascular mass with necrosis (red arrow) (partial response). Douglas pouch (red arrow) is showing persistent vascular implants (C) and malignant adhesions with loculated ascites and rectal muscle invasion (progressive).



Supplementary Figure 2: ultrasound are showing right ovary (A) after chemotherapy appearing as small, normal size and avascular (complete response) (red arrow) while the left one (B) is larger, irregular, vascular and adherent to the surrounding (red arrow) (partial response).